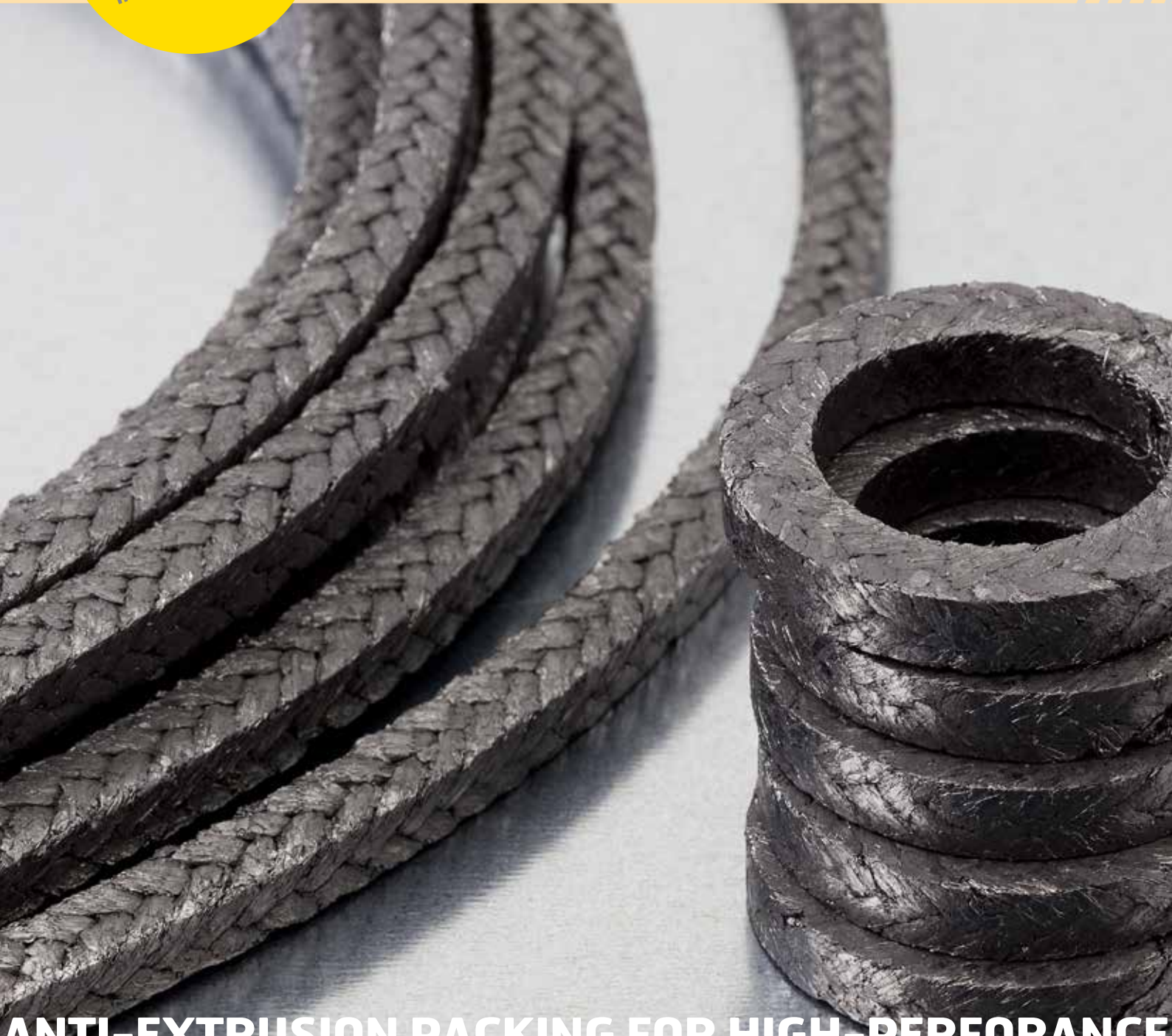


BRAIDED PACKINGS & RINGS



LATTY[®] graf 6940



**ANTI-EXTRUSION PACKING FOR HIGH-PERFORMANCE
AND HIGH-TEMPERATURE APPLICATIONS**

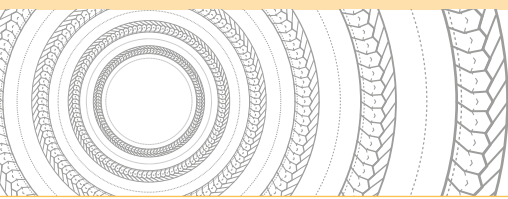


BAM



www.latty.com





LATTY[®]graf 6940

BRAIDED PACKINGS & RINGS

Anti-extrusion packing for high-performance and high-temperature applications.

Characteristics

- ▶ Packing made of expanded graphite yarns reinforced with Inconel wires and coated with a graphite-based mix
- ▶ Contains a corrosion inhibitor to protect the valve stem and the stuffing box
- ▶ Available in preformed packing rings, on request
- ▶ Limitation: precautions for use in oxidising environment

Advantages

- ▶ Withstands high pressures and prevents any risks of graphite extrusion
- ▶ Use where fire-safety is required
- ▶ High-temperature and high-pressure applications

Approvals

- ▶ BAM (oxygen)
- ▶ Amended fire test API 607

Industries

- ▶ Power stations
- ▶ Refineries

Equipments

- ▶ Valves
- ▶ Boiler plants

Dimensions

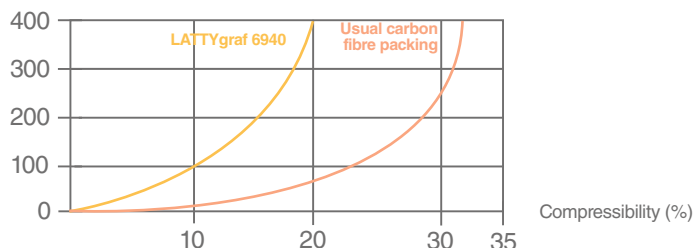
- ▶ Available in square section of 3 to 25,4 mm.

Parameters (not associated)

- ▶ Pressure: < 400 bar
- ▶ Temperature: -200°C to +600°C
<450°C (oxidant)
- ▶ Speed: < 1 m/s
- ▶ pH: 0 - 14

Behaviour of the packing LATTY[®]graf 6940

Tightening pressure (daN/cm²)



The information given in this document is for guidance only and does not commit LATTY international in any way. LATTY international does not warrant the performance of its products, unless properly fitted and used in accordance with the instructions, nor can it accept any claim for consequential liability.. LATTY International S.A. is only liable for the quality of its products as it does not involve itself in their fitting or use, which must be done in accordance with the instructions.



Plant
1, rue Xavier Latty
28160 BROU, FRANCE
Tél. : +33 (0) 2 37 44 77 77
Fax : +33 (0) 2 37 44 77 99
customerservice@latty.com



www.latty.com