

JOINTS / GARNITURES MECANIQUE / RACCORDS TOURNANTS / TRESSSES / JOINTS / GARNITURES MECANIQUE
/ FLACHDICHTUNGEN / GLEITRINGDICHTUNGEN / DREHDURCHFÜHRUNG / PACKUNGEN / FLACHDICHTUNGEN
/ PACKINGS / JOINTINGS / MECHANICAL SEALS / ROTARY UNIONS / PACKINGS / JOINTINGS / MECHANICAL SEALS
/ EMPAQUETADURAS / CIERRES MECANICOS / JUNTAS ROTATIVAS / EMPAQUETADURAS / JUNTAS / CIERRES

BRAIDED PACKINGS & RINGS



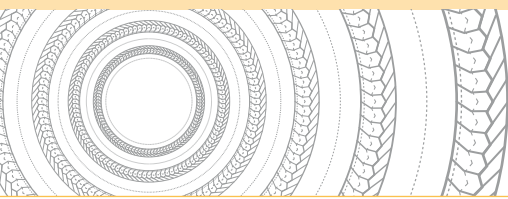
LATTY[®] graf 6940 EF



**CARBON/GRAPHITE PACKING
FUGITIVE EMISSIONS FOR VALVES
AND FITTINGS**

www.latty.com





LATTY[®] graf 6940 EF

BRAIDED PACKINGS & RINGS

Carbon/graphite packing to fight against fugitive emissions

Characteristics

- ▶ Packing made of expanded graphite yarns reinforced with Inconel wires, coated with a graphite-based mix incorporating an agent to improve the friction coefficient.
- ▶ Contains a corrosion inhibitor to provide protection against corrosion of the stem and stuffing box housing. This protection is unlimited in time.
- ▶ On request, available as preformed rings.

Advantages

- ▶ Heat transfer and all high-temperature fluids.
- ▶ Reduced friction
- ▶ High-temperature and high-pressure applications

Certifications

- ▶ TUV (VDI 2440)
- ▶ BAM (oxygen)
- ▶ API 589

Industries

- ▶ Energy production
- ▶ Refineries
- ▶ Boilers

Equipments

- ▶ Valves and fittings
- ▶ Boilers

Dimensions

- ▶ Square sections available from 4 to 18 mm
- ▶ Other dimensions on request

Parameters (not associated)

- ▶ Pressure: < 400 bars
- ▶ Temperature: -200°C to +600°C
- ▶ Speed: < 1 m/s
- ▶ pH: 0 to 14

Note

- ▶ LATTYgraf 6940 EF is recommended as anti-extrusion rings when used in conjunction with: LATTYgraf EF4 or LATTYflon 3260 LM.



The information given in this document is for guidance only and does not commit LATTY international in any way. LATTY international does not warrant the performance of its products, unless properly fitted and used in accordance with the instructions, nor can it accept any claim for consequential liability.. LATTY International S.A. is only liable for the quality of its products as it does not involve itself in their fitting or use, which must be done in accordance with the instructions.



Plant
1, rue Xavier Latty
28160 BROU, FRANCE
Tél. : +33 (0) 2 37 44 77 77
Fax : +33 (0) 2 37 44 77 99
customerservice@latty.com



www.latty.com