



SEALING NUCLEAR VALVES AND FITTINGS

PTFE & GRAPHITE PACKINGS FOR VALVES AND FITTINGS

REDUCED TIME FOR CNPE⁽¹⁾ REQUALIFICATION

AS A RESULT OF EXCLUSIVE, VERY LOW FRICTION, MANUFACTURING PROCESSES.

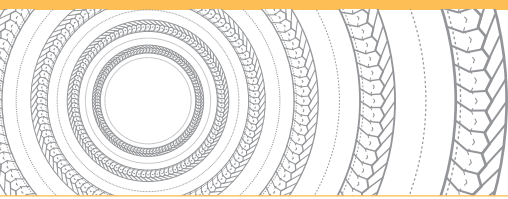
PACKINGS QUALIFIED UNDER ACCIDENT CONDITIONS

RESISTANCE TO RADIATION UP TO 4,000 kGy⁽²⁾.



LATTYgraf 8945 BS
LATTYgraf 9110

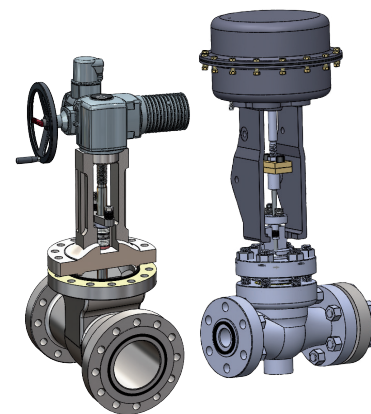
LATTYgraf 8945 BS
LATTYflon 3265 FR



Packings qualified under accident conditions (MQCA⁽³⁾) for control valves or on-off valves in categories K1, K3ad and K3⁽⁴⁾.

Advantages

- ▶ Safety and security of nuclear installations and personnel
- ▶ Saving time for the requalification of the material
- ▶ Reduced dosimetry for operators
- ▶ Resistance to radiation up to 4,000 KGy
- ▶ Improved friction coefficient
- ▶ Provides outstanding sealing efficiency under low clamping force
- ▶ Very good resistance in the event of drastic variations in temperatures or pressures
- ▶ Contains a passive, time-unlimited corrosion inhibitor (exclusive LATTY process)



FRICION COEFFICIENT REDUCED BY 30%

LATTYgraf 8945 BS + LATTYgraf 9110
PMUC n° 17-0364 and 17-0391



FRICION COEFFICIENT REDUCED BY 70%

LATTYgraf 8945 BS + LATTYflon 3265 FR
PMUC n° 17-0364 and 17-0363



Composition

- ▶ Compressed high-purity expanded graphite rings up to PMUC requirements
- ▶ Compressed high purity, Inconel reinforced, anti-extrusion rings, up to PMUC requirements

Parameters (not associated)

- ▶ Temperature: up to 450°C
- ▶ Pressure: 400 bar max
- ▶ pH: 0 - 14

Composition

- ▶ Compressed PTFE rings with core made of carbon yarns, up to PMUC requirements
- ▶ Compressed high purity, Inconel reinforced, anti-extrusion rings up to PMUC requirements

Parameters (not associated)

- ▶ Temperature: up to 310°C
- ▶ Pressure: 400 bar max
- ▶ pH: 0 - 14

Static sealing in relation to nuclear valves and fittings: Valve bodies/bonnets, seats, plates, flanges, etc.



Seals GEM, LATTYgraf REFLEX



Graphite rings



Static seals (fibre, PTFE, graphite, etc.)



EPDM-based elastomer seals

(1) CNPE: Nuclear Power Plant Electricity Generation. (2) kGy: kiloGray, gray is a standard measurement unit of absorbed radiation dose of ionizing radiation (3) MQCA: Qualified Materials at Accidental Conditions. (4) K1 = category of equipment qualification in accident conditions inside the reactor building, K3 = category of equipment qualification in accident conditions outside the reactor building, K3AD = K3 + earthquakes and irradiation.

The information given in this document is for guidance only and does not commit LATTY international in any way. LATTY international does not warrant the performance of its products, unless properly fitted and used in accordance with the instructions, nor can it accept any claim for consequential liability. LATTY International S.A. is only liable for the quality of its products as it does not involve itself in their fitting or use, which must be done in accordance with the instructions.



Plant
1, rue Xavier Latty
F-28160 BROU, FRANCE
Tél. +33 (0) 2 37 44 77 77
Fax +33 (0) 2 37 44 77 99
customerservice@latty.com



www.latty.com