

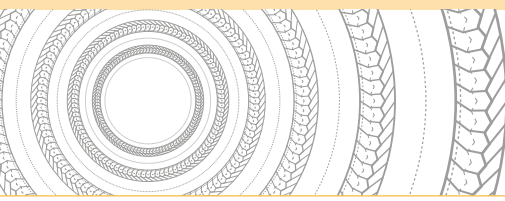


TRESSES & BAGUES

LATTYcore 4758 G



**PACKINGS FOR ROTARY UNIT
APPLICATIONS WITH AGGRESSIVE
FLUIDS**



LATTYcore 4758 G

PACKINGS & RINGS

Packings for rotary unit applications with aggressive fluids

Characteristics

► Silicone-free packing with a compound graphite core and corners made of 100% aramid yarns impregnated yarn by yarn with PTFE using our exclusive «Filcoat»-process, friction faces with 100% lubricated PTFE, then re-impregnated with a PTFE mix during braiding operation.

Advantages of the graphite core

► MORE ELASTICITY

The elasticity provided by graphite means reduced running-in time, more time between retightening operations and optimum sealing efficiency under low clamping force.

► REDUCED FRICTIONS

The addition of graphite in the core of our packings reduces friction and you benefit from significant water and energy savings.

► CHEMICAL INERTNESS

Unlike elastomers, the graphite contained in the core of our packings is resistant to most chemicals such as mineral agents, solvents, etc.

► AGEING RESISTANCE

Graphite, a highly ageing resistant material, increases the time interval between two maintenance operations.

► RESISTANCE TO HIGH TEMPERATURES

Unlike elastomers, graphite is neither affected by shrinkage nor by structural changes at high temperatures.

HANDLING AND PROCESSING EASE

The flexibility of graphite make assembly and disassembly operations easier.

Parameters (not associated)

- Temperature: - 200°C to + 300°C
- Pressure: <1000 bar
- Speed: < 10 m/s
- pH: 2-14

Types of industries

- Mining and quarrying
- Sugar
- Paper
- Cement
- Chemicals
- Petrochemicals
- Energy
- Pharmaceuticals

Equipment

- Rotary pumps
- Stirrers
- Mixers
- Crushers
- Conveyors

Dimensions

- Available in square sections from 8 to 25.4 mm in boxes.
- On request, available in length or boxes.



The maximum temperature, pressure and speed parameters indicated in this document can in no case be associated. The information given in this document is for guidance only and does not commit LATTY international in any way. LATTY international does not warrant the performance of its products, unless properly fitted and used in accordance with the instructions, nor can it accept any claim for consequential liability.. LATTY International S.A. is only liable for the quality of its products as it does not involve itself in their fitting or use, which must be done in accordance with the instructions



Plant
 1, rue Xavier Latty
 F-28160 BROU, FRANCE
 Tél. +33 (0) 2 37 44 77 77
 Fax +33 (0) 2 37 44 77 99
 customerservice@latty.com



www.latty.com