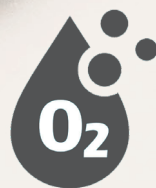




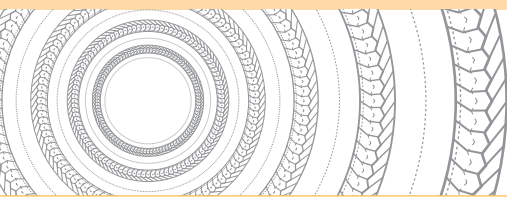
BRAIDS & RINGS

LATTYgraf 02



Oxygen
Service

**DEDICATED HIGH-
PRESSURE BRAID
FOR GASEOUS AND
LIQUID OXYGEN**



LATTYgraf O2

BRAIDS & RINGS

Specially produced on a dedicated line, LATTYgraf O2 guarantees the reliability and safety of valve seals in oxygen, liquid or gaseous service.

Features

- ▶ Braid made from $\geq 98\%$ pure Inconel-coated expanded graphite wire, specifically developed for high-temperature and high-pressure applications in contact with oxygen.
- ▶ Contains an oxidation inhibitor.
- ▶ Anti-extrusion braid.

Advantages

- ▶ High strength for high temperature environments oxidizing and highly oxidizing.
- ▶ High mechanical resistance to extrusion and high pressures.
- ▶ Compact structure for high mechanical loads.
- ▶ Good die-forging properties, easy to deburr using conventional means.
- ▶ Manufactured on a dedicated line with specific «oxygen service» packaging in lengths or rings.

Approvals

- ▶ BAM
2-315/2015



Equipment

- ▶ Control, regulation or shut-off valves
- ▶ Any device requiring environmental sealing oxygen.

Industry

- ▶ Oxygen
- ▶ Oil & Gas
- ▶ Power generation
- ▶ Chemicals, Pharmaceuticals

Parameters (not related)

- ▶ Temperature: - 200 + 600° C. (steam or non-oxidizing medium)
< 450° C. (highly oxidizing environment)
- ▶ Pressure: 400 bar
- ▶ pH: 0 -14

BAM parameters

- ▶ BAM reference : 2-315/2015
- ▶ Oxygen, Gas and Liquid Service

| T°C maximum | Maximum oxygen pressure |
|----------------------|-------------------------|
| up to 60 °C | 430 bar |
| > 60 °C up to 250 °C | 260 bar |

Also available in our Service Oxygène range:

Guaranteed friction reduction in your industrial valves



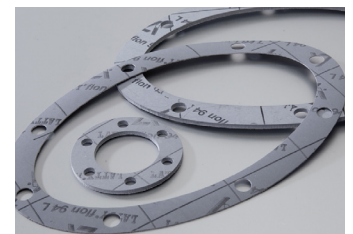
PTFE braids



Graphite braids



Graphite/PTFE braids



Gaskets

LATTY international cannot be held responsible for the information given in this documentation. We cannot guarantee the performance of our products in the event of faulty assembly or use that does not comply with the instructions given. LATTY international is only responsible for the quality of its products, and does not intervene in the assembly or installation, which must be carried out according to the rules of the trade.



Site de production
 1, rue Xavier Latty
 F-28160 BROU, FRANCE
 Tél. +33 (0) 2 37 44 77 77
 Fax +33 (0) 2 37 44 77 99
 customerservice@latty.com



www.latty.com