

Designer of industrial sealing solutions



- DYNAMIC SEALING**
- STATIC SEALING**
- VALVES**
- TOOLS AND ACCESSORIES**
- SERVICES**



CONTENTS

Designer of industrial sealing solutions



GROUPE LATTY

GROUPE LATTY has been designing and manufacturing industrial sealing solutions in many diverse industrial areas for over a century.

This longevity relates to the permanent willingness to innovate to address each new technical challenge, in France and worldwide.



CONTENTS

Introduction	03
GROUPE LATTY industries	10
Service Centres: maintenance, assistance, intervention	14
Industrial valves and fittings	24
Technical training	26
Centres de services : maintenance, assistance, intervention	27

Agri-food, chemical, petrochemical, pharmaceutical, waste water treatment, wood and paper, energy production, aeronautics, automotive and shipbuilding, mining industries, etc.

The companies trusting GROUPE LATTY belong to such various industrial sectors because the men and women who design and manufacture the LATTY® products know what addressing a challenge means. They combine their expertise and with state-of-the-art tools spread over an innovative industrial park, in the research and development centre, but also in the seal cutting, repair and mechanical seal reconditioning workshops spread across France and abroad.





280

employees worldwide

15

subsidiaries

160

employees in France

+12%

increase in turnover
in 5 years

120

export countries

Designer of industrial sealing solutions

SOURCE FOR INDUSTRIAL SEALING SOLUTIONS

Over 100 years of design and manufacture.

Since the first sealing solutions were developed, 100 years have passed. Today, the LATTY® company is a family-owned and independent group with 300 employees, working on more than 14 sites, the industrial heart of which is located in Brou and covers more than 10,000 sq.m



Continuous improvement

The quality of its products and services is one of the group's inherent priorities. It is supported by numerous approvals, certifications and standards that result in strict and regular controls in laboratories and by continuous training intended for teams and technical services: refurbishment, interventions on customer's premises, approvals, training, etc.



VIRTUAL VISIT 

Enjoy an immersive experience to discover or rediscover the LATTY company.

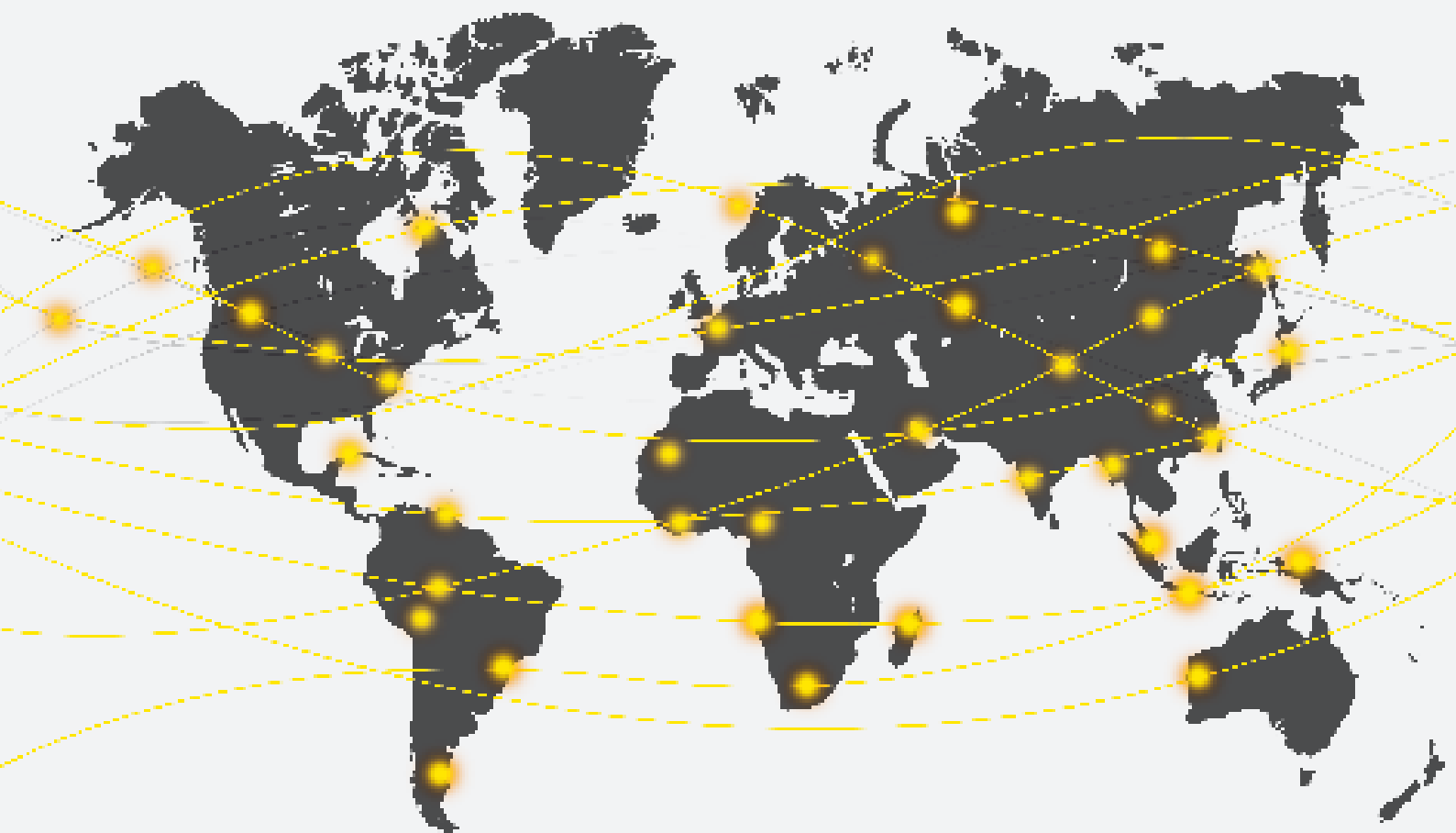


AS CLOSE AS POSSIBLE TO CUSTOMERS

In France...

The French distribution network is made up of a hundred of distributors and cut gasket makers, led by technicians and sales engineers who have expert knowledge of the characteristics and applications of LATTY® products.

They work directly with the companies in their area so as to be as close as possible to the needs of final customers.



... and abroad

With subsidiaries in Europe, South America and North Africa, the LATTY® brand is distributed in the United States, Africa, Oceania, China, etc. Sales abroad account for about half the Group's sales.

A HIGH- PERFORMANCE INDUSTRIAL PRODUCTION SITE

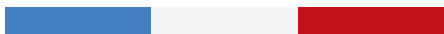
GROUPE LATTY's main production site is located in Brou, in Eure-et-Loir (France). Covering more than 10,000 sq. m., our employees contribute to the expertise that has been built up over the company's century of existence.

Regularly trained in ISO 9001 procedures, in Statistical Process Control (SPC) and in the manufacturing and packaging standards set by some certifications, the workforce daily contributes to the manufacturing quality of LATTY® products.

The company's production strength is based on state-of-the-art machinery consisting of:

- Diagonal or circular braiders (8 to 36 carriers),
- Hydraulic presses (12 to 5 500 kN)
- Four- and five-axis machining centres
- Lapping machines
- A waterjet cutting machine

MADE IN FRANCE





INNOVATION TO MEET PERFORMANCE REQUIREMENTS

For over a century, GROUPE LATTY has undertaken to implement the most efficient and the most innovative sealing solutions for its customers. That is why every year 5% of turnover is invested in research and development.

PRODUCT QUALIFICATION & APPROVAL

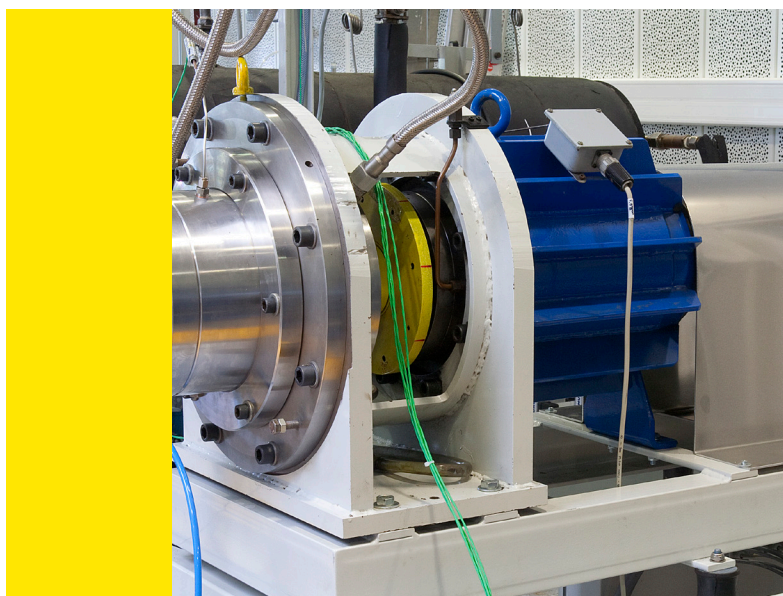
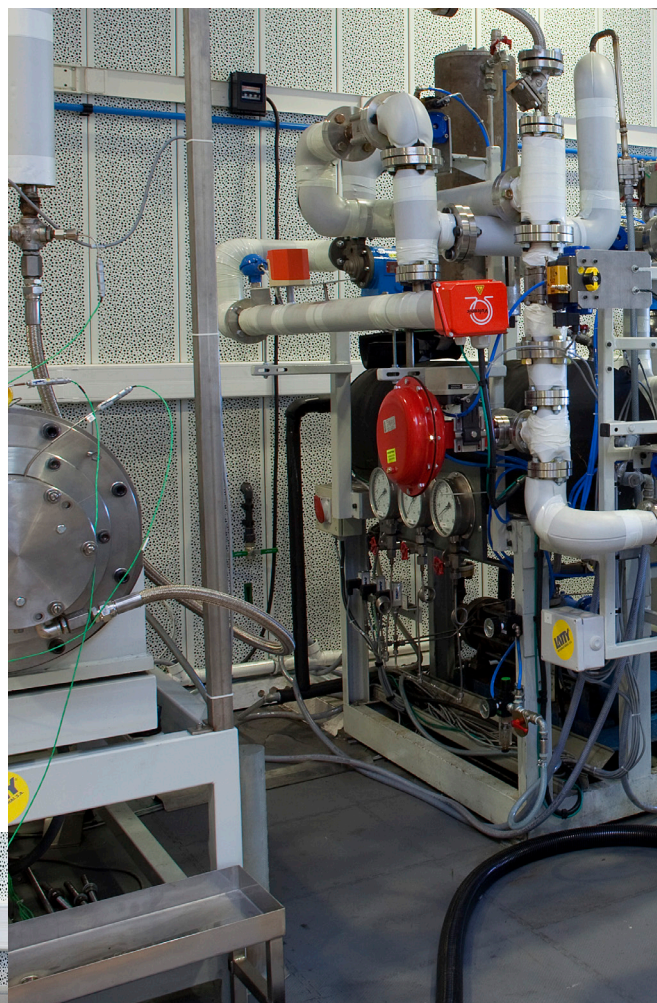
GROUPE LATTY has contributed to numerous approvals and qualifications for its customers' equipment and its own products over the past few years. The approval of equipment is carried out in the Brou test and qualification laboratory and in collaboration with approved laboratories and organisations.

RESEARCH & DEVELOPMENT: INNOVATION AS A DRIVER

GROUPE LATTY helps its customers to incorporate the technical innovations demanded by an increasingly competitive environment.

Every day, a team of engineers focuses exclusively on developing new processes and designing new products that provide dynamic, semi-dynamic or static sealing.

Whether it's a question of reducing friction stress, facilitating the use of equipment while maintaining its efficiency, or reducing maintenance time, every effort is made to offer ever more innovative products.





APPROVALS & CERTIFICATIONS: USERS AND MANUFACTURERS TRUST US

By virtue of a policy of constant innovation, GROUPE LATTY, via its R&D department, is able to satisfy new requirements and keep pace with changing standards and directives.

EQUIPMENT APPROVAL

The equipment approvals performed by GROUPE LATTY for its end-users or OEMs are carried out by its test and approval laboratory based in Brou, France.



Approvals, Certifications, Directives and Standards include,

- ☉ Food processing: FDA, EC 1935/2004, 3A, EHEDG
- 💧 Water: WRAS, KTW, ACS
- ☢ Nuclear energy: PMUC, AECL, ASME, RCC-M, ISO 19443
- 🔥 Fire test: API 607, API 689, API 589
- ☎ Gas: DVGW
- 🔴 Oxygen: BAM, ATEX, SHELL, WHA, GAS AND LIQUID OXYGEN SERVICE
- ⚠ Fugitive emissions: API 622 2018, 3rd edition, API 624, API 641, ISO 15848-1, TÜV VDI 2440, SHELL, Total SGM 2082.TUY



GROUPE LATTY INDUSTRIES

Designer of industrial sealing solutions

GROUPE LATTY INDUSTRIES



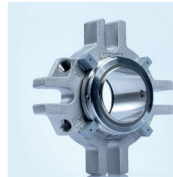
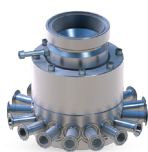
Today, many industrial sectors trust GROUPE LATTY. Even though they require the same high standards, each one is specific.

For almost a century, LATTY® products have benefited from the diversity acquired from innovations in design.



FOOD PROCESSING

LATY designs and manufactures sealing solutions specifically adapted to the constraints of food processing industry.



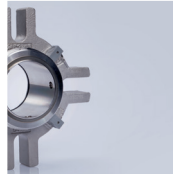
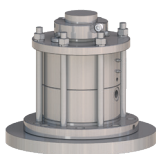
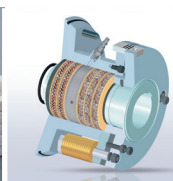
CHEMICAL INDUSTRY

The sealing solutions sought in chemical industries are mainly oriented towards personnel safety and environmental protection.



PHARMACEUTICAL INDUSTRY

Traceability, personal safety and compliance with standards are the main concerns of the pharmaceutical industry, which is looking for reliable, high-performance seals.



Designer of industrial sealing solutions



MINING AND QUARRYING

Thanks to our experience, our ranges of products meet the main constraints such as dust, debris, sludge and moisture present in the mining and quarrying industry.



PAPER

Environmental protection and the reduction of water consumption are priorities, but reducing, or even eliminating down-time is just as important.



ENERGY PRODUCTION

As a partner of the main players in energy production, our sealing solutions are designed for not just nuclear, thermal and hydraulic energy, but also for the renewable energy sectors.





OIL AND GAS

Safety of persons and respect for the environment are a major concern for oil and gas industries. Our products contribute to the reduction of fugitive emissions by reducing actuator response times.



WATER TREATMENT

We provide specific products to the water industry (extraction, waste water treatment, drinking water) for improved respect for the environment and reduction in water consumption.



OTHER INDUSTRIES

A large number of other industries implement our sealing solutions: special machinery, boilers, machine-tools, etc. The Eiffel Tower being one of them.



A COMPREHENSIVE RANGE OF PRODUCTS AND SERVICES

Designer of industrial sealing solutions

A COMPREHENSIVE RANGE OF PRODUCTS AND SERVICES

The LATTY® products meet the strictest of client requirements, from the initial design brief through to the test procedures and on to manufacture. This is the way the Group has been providing its industrial customers full reliability for over a century.

Because the technical solutions that are best suitable for industries are often custom-designed, GROUPE LATTY places teams of specific technical consultants at their disposal.



⋮

STUDY
01



⋮

SOLUTION
02



⋮

MANUFACTURE
03

SOLUTIONS ADAPTED TO THE ENVIRONMENTS AND USE OF YOUR SEALING PRODUCTS

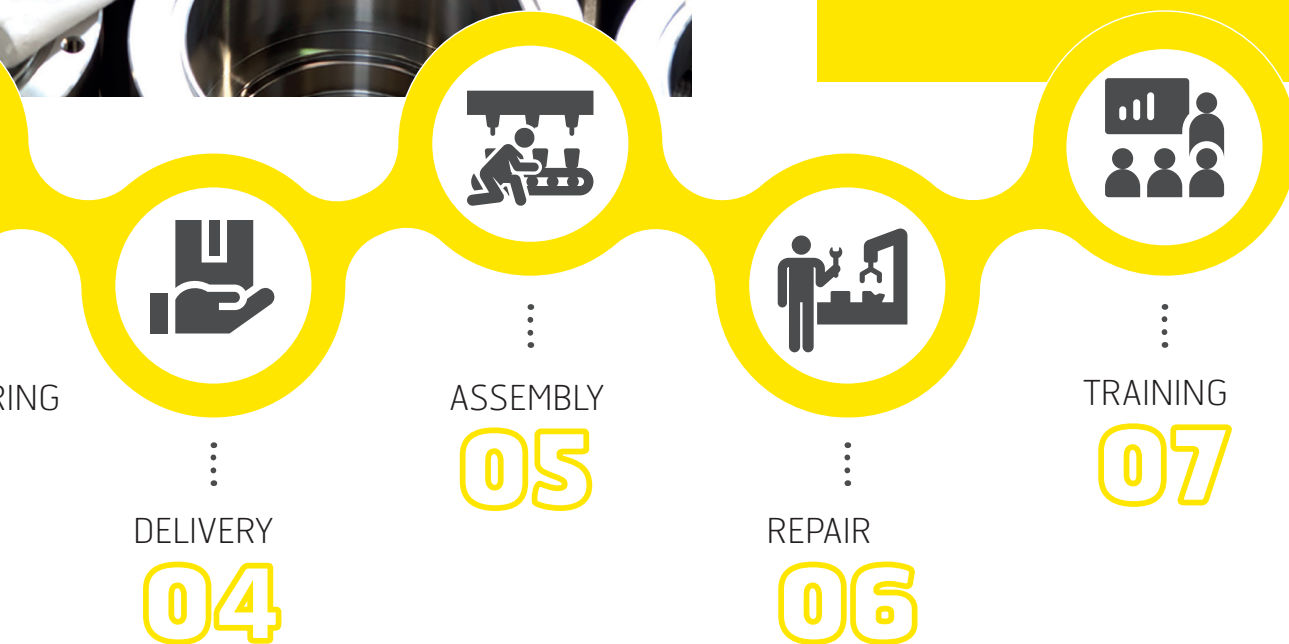


IMPROVE THE PERFORMANCE OF SEALING PRODUCTS

From a standard base, our engineers design customised sealing solutions to meet the varied needs of manufacturers in all sectors of activity.

Continuously improve production

- + productivity
- production stoppages
- + environmentally friendly
- maintenance down time



Designer of industrial sealing solutions

A COMPREHENSIVE RANGE OF PRODUCTS AND SERVICES FOR ROTARY EQUIPMENT

Our research for the development of fibres and lubricants allows us to offer a range that includes about fifty different grades of braided packings.

Made up of over 70 types of impregnation and 120 different kinds of yarns (aramid, PTFE, graphite, carbon, etc.), the gland packings are intended for use in the stuffing box of pumps, valves, agitators and other rotary equipment.

The main fibres and their characteristics

ARAMID FIBRE

- Very good chemical resistance
- Used with very abrasive products
- Outstanding dimensional stability
- High elasticity and elastic recovery
- Very good resistance at high temperatures

PTFE FIBRE

- Applied to rotary units and valves with chemically aggressive fluids
- Very good resistance to strong bases and acids
- Improves the friction coefficient, which is especially important with control valves.
- Good resistance at high speeds.

SYNTHETIC FIBRE

- Used up to 200/250°C
- Any type of industry except chemicals
- To be avoided with acid and strong bases

CARBON/GRAPHITE FIBRE

- Pure graphite for high-temperature and high-pressure applications
- Insensitive to thermal shocks
- Outstanding chemical inertness
- Used to fight against fugitive emissions in valves and fittings.



Rotary Pumps



Reciprocating pumps



Insulation



Valves



Static Applications

THE FILCOAT PROCESS, an invention by LATTY®

The impregnation of braided packings enables us to obtain or improve specific characteristics such as:

- Chemical resistance
- Thermal conductivity
- Stability under pressure
- Lubrication (especially during transient conditions)
- Protection against corrosion

Then these fibres are again impregnated during the braiding operation with a mix specific to the use of the packing. These processes significantly reduce friction and greatly improve the lifespan of the equipment (pumps, valves, etc.).

THE ADVANTAGE OF LATTY® PACKINGS

Since the foundation of our company, we have had a record of providing quality and performance with our ranges of sealing packings and rings. With among others our FILCOAT® process, patented by LATTY®, we ensure performance and reliability.



A RANGE OF PACKINGS WITH EXCEPTIONAL PERFORMANCE

GRAPHITE AT THE HEART OF THE PACKINGS

LATTY innovation with this new range of innovating range of packings as regards structure and composition. The addition of expanded graphite into the core of our packings provide them remarkable suppleness and elastic recovery.



CHEMICAL INERTNESS

Packing with graphite core, made of 100% PTFE silk yarns, pre-treated with graphite impregnation to the core and with a silicon lubricant. Packing suitable for aggressive environments in dynamic sealing applications



T -200°C to 250°C | S < 20 m/s | P 0 to 80 bar | pH 0-14



LATTYCORE 3207 G

HIGH MECHANICAL RESISTANCE

Packing with graphite core, made of synthetic yarns and fibres based on aramid and silicone-free lubricant, the yarns being impregnated to the core using our exclusive «Filcoat»-process prior to braiding operation



T -50°C to 260°C | S < 20 m/s | P 0 to 100 bar | pH 2-13



LATTYCORE 5790 G

VERY GOOD RESISTANCE WITH ABRASIVE FLUIDS

Compound packing with graphite core made of 100% aramid yarns impregnated with PTFE using our exclusive «Filcoat»-process, friction faces made 100% PTFE with silicone-free lubricant, then re-impregnated with a PTFE mix during braiding operation



T -220°C to 300°C | S < 10 m/s | P 0 to 1000 bar | pH 2-14



LATTYCORE 4758 G

VERY GOOD RESISTANCE WITH ABRASIVE FLUIDS

Packing with graphite core, made of composite phenolic yarns on the edges and polyacrylic yarns on friction faces.



T -200°C to 260°C | S < 20 m/s | P 0 to 200 bar | pH 1-13



LATTYCORE 7189 G

VERY HIGH MECHANICAL PERFORMANCE.

Packing with graphite core, made of 100%-aramid fibres, each single yarn being impregnated with PTFE using our exclusive «Filcoat»-process, then re-impregnated with a PTFE mix during braiding operation



T -220°C to 300°C | S < 25 m/s | P 0 to 200 bar | pH 2-13



LATTYCORE 4788 G



ROTARY UNITS SEALING

Designer of industrial sealing solutions

BRAIDS FOOD

LATTYflon
3206 CE⁽¹⁾
3206 AL⁽²⁾
3206 SO⁽³⁾



PTFE



T -200°C to 300°C | S < 5 m/s | P 0 to 300 bar | pH 0-14

Approvals: ⁽¹⁾ EC 1935/2004 (ON REQUEST) ⁽²⁾ CRECEP-ACS, FDA 21 CFR 177.1550 ⁽³⁾ FDA, CE 1935/2004, OXYGEN, TUV

LATTYflon
5706



ARAMID /PTFE



T -200°C to 200°C | S < 1 m/s | P 1000 bar | pH 2-13

Approval : CE 1935/2004

LATTYflon
5790



ARAMID



T -200°C to 260°C | S < 20 m/s | P 0 to 100 bar | pH 2-13

Approval : CE 1935/2004

LATTYflon
4788



ARAMID



T -220°C to 300°C | S < 25 m/s | P 0 to 200 bar | pH 2-13

Approval: PMUC 17-0044

LATTYflon
4789



ARAMID



T -200°C to 275°C | S < 20 m/s | P 0 to 100 bar | pH 2-12

Approvals: PMUC 17-0045 / WRAS

LATTYflon
4758



ARAMID



T -220°C to 300°C | S < 10 m/s | P 0 to 1000 bar | pH 2-14

LATTYflon
4757



ARAMID



T -220°C to 300°C | S < 22 m/s | P 0 to 1800 bar | pH 2-14

BRAIDS FOR CHARGED FLUIDS AND HIGH MECHANICAL STRENGTH

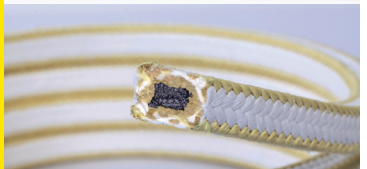
LATTYcore
7189 G
5790 G
4758 G
4788 G




T -200°C to 260°C | S < 20 m/s | P 0 to 200 bar | pH 1-13



T -50°C to 260°C | S < 20 m/s | P 0 to 100 bar | pH 2-13



T -220°C to 300°C | S < 10 m/s | P 0 to 1000 bar | pH 2-14

GRAPHITE CORE



T -220°C to 300°C | S < 25 m/s | P 0 to 200 bar | pH 2-13

The temperature, pressure and maximum speed parameters indicated cannot be combined in any way



ROTARY UNITS SEALING

BRAIDS FOR UTILITIES

LATTYflon
2790




SYNTHETIC

T -50°C to 260°C | S < 15 m/s | P 0 to 100 bar | pH 1-13

Approvals : CE 1935/2004 (ON REQUEST)

LATTYtex
2761



SYNTHETIC

T -50°C to 260°C | S < 15 m/s | P 0 to 100 bar | pH 1-13

BRAIDS FOR HIGH TEMPERATURE

LATTYgraf
T



CARBON GRAPHITE

T -200°C to 600°C | S < 35 m/s | P 0 to 300 bar | pH 0-14

LATTYgraf
TSP



CARBON GRAPHITE

T -200°C to 550°C | S < 35 m/s | P 0 to 300 bar | pH 0-14

LATTYgraf
6745NG



CARBON GRAPHITE

T 450°C to 600°C | S < 25 m/s | P 0 to 300 bar | pH 0-14

LATTYflon
4488



ARAMID CARBON

T -220°C to 300°C | S < 30 m/s | P 0 to 300 bar | pH 1-13

Approval: AECL

LATTYflon
3206
3206 S



PTFE

T -200°C to 300°C | S < 5 m/s | P 0 to 300 bar | pH 0-14

BRAIDS FOR CHEMICAL FLUIDS

LATTYflon
4308



PTFE GRAPHITE

T -200°C to 300°C | S < 26 m/s | P 0 to 110 bar | pH 1-14

LATTYcore
3207 G



GRAPHITE CORE

T -200°C to 250°C | S < 20 m/s | P 0 to 80 bar | pH 0-14

TOOLS

Braid cutter
and rings



TOOLS

Tightening
compensation
systems



LATTY LLS

The temperature, pressure and maximum speed parameters indicated cannot be combined in any way

ROTARY UNITS SEALING

Designer of industrial sealing solutions

COMPONENT MECHANICAL SEAL SINGLE BALANCED & UNBALANCED

LATTYseal
U/B 1000



BALANCED OR NOT

T -20°C to 180°C | S < 10 m/s | P 0 to 10 bar

Approvals: EC 1935/2004, FDA (ON REQUEST)

LATTYseal
U112/1212



UNBALANCED

T -20°C to 180°C | S < 10 m/s | P 0 to 10 bar

Approvals: EC 1935/2004, FDA (ON REQUEST)

LATTYseal
U/B 6812



BALANCED OR NOT

T -20°C to 220°C | S < 15 m/s | P 0 to 10 bar

Approvals: EC 1935/2004, FDA (ON REQUEST)

LATTYseal
B23112/212



BALANCED

T -20°C to 160°C | S < 20 m/s | P 0 to 25 bar

Approvals: EC 1935/2004, FDA (ON REQUEST)

LATTYseal
B10712



BALANCED

T -20°C to 180°C | S < 10 m/s | P 0 to 10 bar

Approvals: EC 1935/2004, FDA (ON REQUEST)

LATTYseal
B18



BALANCED

T -20°C to 180°C | S 0 to 25 m/s | P 0 to 10 bar

Approvals: EC 1935/2004, FDA (ON REQUEST)

LATTYseal
B17110/210
B/HT

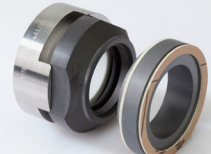


BALANCED

T -20°C to 220°C | S < 25 m/s | P 0 to 20 bar

Approvals: EC 1935/2004, FDA (ON REQUEST)

LATTYseal
B16660/70



BALANCED

T -20°C to 220°C | S < 15 m/s | P 0 to 10 bar

Approvals: EC 1935/2004, FDA (ON REQUEST)

LATTYseal
ALFA LAVAL



OEM

Approvals: WRAS, FDA (ON REQUEST)

LATTYseal
APV



OEM

Approvals: WRAS, FDA (ON REQUEST)

LATTYseal
GRUNDFOS



OEM

Approvals: WRAS, FDA (ON REQUEST)

LATTYseal
500



OEM

Approvals: WRAS, FDA (ON REQUEST)

MECHANICAL SEALS B : BALANCED > 10 BAR
MECHANICAL SEALS U : UNBALANCED < 10 BAR


The temperature, pressure and maximum speed parameters indicated cannot be combined in any way



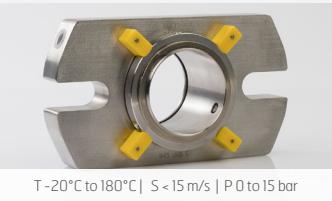
ROTARY UNITS SEALING

MECHANICAL SEAL CARTRIDGE

CARTseal
B22




CARTRIDGE



Approval: ATEX (ON REQUEST)

CARTseal
B23




CARTRIDGE

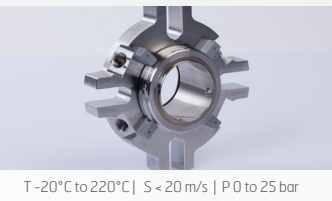


Approvals: EC 1935/2004, FDA (ON REQUEST)

CARTseal
B24




CARTRIDGE



Approvals: EC 1935/2004, FDA, ATEX, ACS (ON REQUEST)

CARTseal
B25




CARTRIDGE

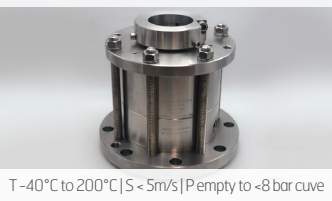


MECHANICAL SEAL SPECIFIC APPLICATIONS

LATTYMIX
RU6812 D




CARTRIDGE BOX



Approvals: EC 1935/2004, FDA, ATEX ET DIN (ON REQUEST)

PECODY



BRAID BOX



Approvals: EC 1935/2004, FDA, EHEDG, ATEX (ON REQUEST)

ROTARY
UNITS



DYNAMIC SEALING



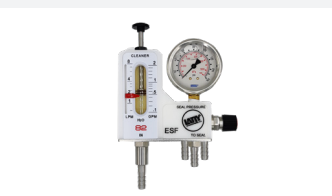
Approvals: EC 1935/2004, FDA, DIN (ON REQUEST)

AUXILIARY SYSTEMS - LATTYlub

NEW

FLOW CONTROL
AND PRESSURE
VALVE

LATTYlub Flowcontrol



CONTROL AND
ADJUST THE
TEMPERATURE

LATTYlub Thermoflow



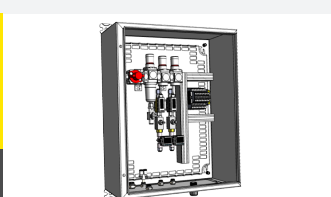
LUBRICATION
TANK

LATTYlub Pot



GAS CONTROL
PANEL (GCP)

LATTYlub Gascontrol



The temperature, pressure and maximum speed parameters indicated cannot be combined in any way

STATIC SEALS

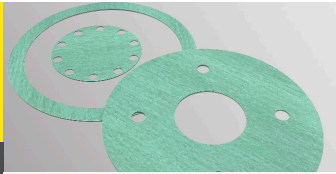
Designer of industrial sealing solutions

GASKET SHEETS FOR HIGH MECHANICAL STRENGTH

LATTYgold
32R



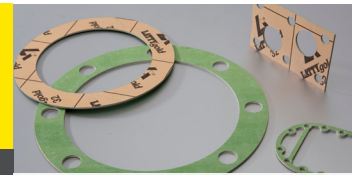
SYNTHETIC FIBER



T -50°C to 180°C | P 0 to 40 bar

LATTYgold
32

SYNTHETIC FIBER



T 0°C to 300°C | P 0 to 60 bar

LATTYgold
92



ARAMID



T 0°C to 440°C | P 0 to 100 bar

Approvals: BAM, DVGW, KTW, WRAS, PMUC 17-053

LATTYgold
92 G2F



ARAMID



T 0°C to 440°C | P 0 to 100 bar

LATTYgold
925



ARAMID



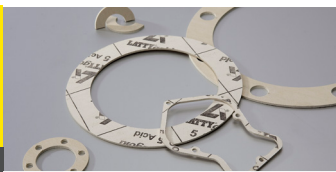
T 0°C to 440°C | P 0 to 130 bar

Approval: PMUC 17-237

LATTYgold
5 ACID



SYNTHETIC FIBER



T 0°C to 200°C | P 0 to 60 bar

LATTYcarb
96



CARBON



T 0°C to 450°C | P 0 to 130 bar

Approvals: BAM, KTW, WRAS, TUV VDI 2440

LATTYcarb
96 G2F



CARBON



T 0°C to 450°C | P 0 to 130 bar

LATTYcarb
965



CARBON



T 0°C to 450°C | P 0 to 150 bar

GASKET SHEETS FOR HIGH TEMPERATURES

LATTYgraf EFA



GRAPHITE



T -200°C to 650°C | P 0 to 650 bar | ph 0 - 14

Approval: BAM

LATTYgraf EFI



GRAPHITE



T -200°C to 650°C | P 0 to 650 bar | ph 0 - 14

Approval: DVGW

LATTYgraf HPML



GRAPHITE



T -200°C to 700°C | P 0 to 250 bar | ph 0 - 14

Approval: API 6FB, DVGW, BAM


The temperature, pressure and maximum speed parameters indicated cannot be combined in any way



STATIC SEALING

GASKET SHEETS RESISTANT TO CHEMICAL FLUIDS

LATTYflon 84L




PTFE

T -200°C to 260°C | P 0 to 85 bar | ph 0-14

Approval: FDA, BAM

LATTYflon 94L




PTFE

T -210°C to 260°C | P 0 to 80 bar | ph 0-14

Approvals: BAM, FDA, PMUC, EC 1935/2004.

LATTYflon 95




PTFE

T -240°C to 270°C | P 0 to 210 bar | ph 0-14

Approvals: FDA 177-1550 DU CFR 21, EC 1935/2004

LATTYflon 97




PTFE

T -100°C to 250°C | P 0 to 100 bar | ph 0-14

Approvals: TÜV, FDA

LATTYflon UNISEAL



PTFE

T -240°C to 290°C | P 0 to 200 bar | ph 0-14

Approvals: FDA, BAM, EC 1935/2004

LATTYflon MULTISEAL



PTFE

T -240°C to 260°C | P 0 to 200 bar | ph 0-14

Approval: FDA

OTHER GASKETS

LATTYgraf REFLEX



GRAPHITE/METAL

T -200°C to 600°C | P 0 to 500 bar | ph 0-14

Approvals : PMUC 17-185

GRAPHITE RINGS



GRAPHITE

T -200°C to 650°C | P 0 to 1000 bar

Approvals : ISO 15848-1, CLASSE BH, TA LUFT VDI 2440, BAM, PMUC

ELASTOMER



NUCLEAR

Approvals : PMUC

LATTYpack 960



GRAPHITE

T 0°C to 350°C | P 0 to 80 bar


HEPHAISTOS 2000G



MINERAL

T 0°C to 850°C | ph 2-13

HEPHAISTOS 2000T



MINERAL

T 0°C to 850°C | P 0 to 200 bar | ph 2-13

Approvals : BAM, DVGW, KTW, WRAS, PMUC 17-053

ACCESSORIES AND TOOLS

CUTTING



ACCESSORIES

CUTTING TOOL BOX



ACCESSORIES

The temperature, pressure and maximum speed parameters indicated cannot be combined in any way

SEALING VALVES

Designer of industrial sealing solutions

A UNIQUE SOLUTION FOR EACH VALVE!

We have developed in particular products that meet the requirements of industrial valve industries and designed sealing solutions for:

- stuffing boxes
- flange gaskets
- seat gaskets
- valve body/bonnet gaskets
- fire safety seals
- butterfly valve seals

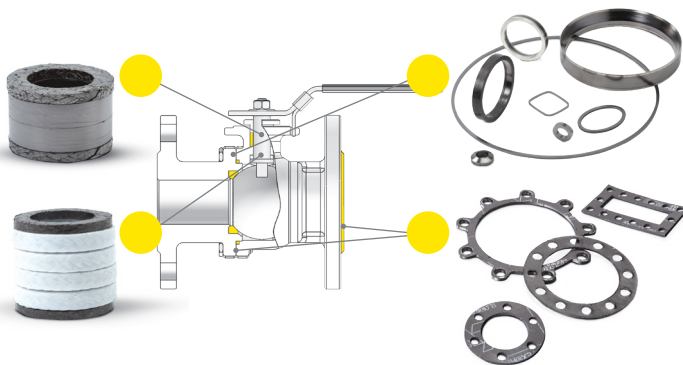
Our equipment allows us to test sealing solutions on your own equipment under optimum conditions, i.e.:

- temperature: 196°C to 650°C
- pressure: vacuum to 650 bar for gas applications or 0 to 700 bar for liquid applications.

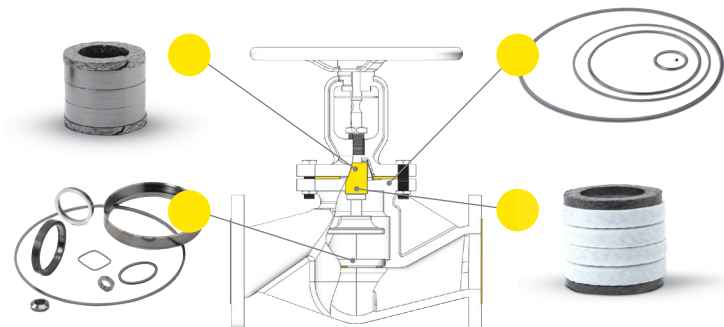
These equipment items comply with existing regulations relative to fugitive emissions, fire and oxygen tests. To date, we have performed over 100 approvals, with validation by external certifying bodies.



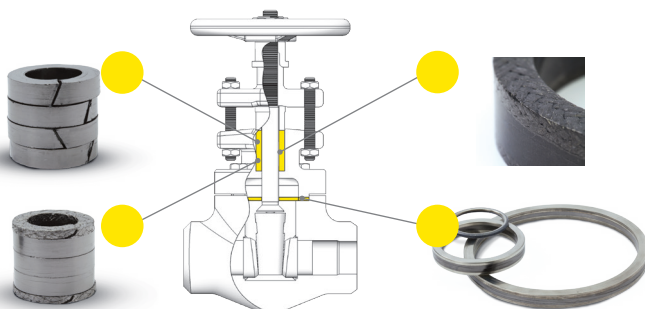
BALL VALVE



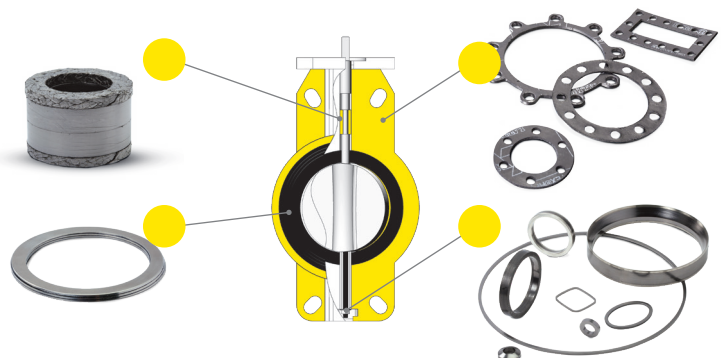
GLOBE VALVES

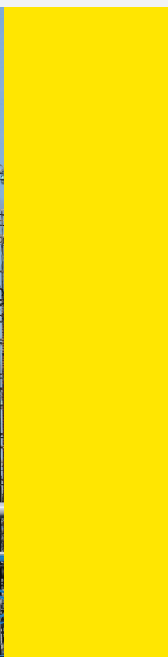


GATE VALVE



BUTTERFLY VALVE





SEALING VALVES

LATTYPACK CONTROL



PACKING
Approval: ISO 15848-1

T -100°C to 300°C | S < 1 m/s | P 400 bar | pH 0-14

GRAPHITE RINGS

RINGS



LATTYPACK CONTROL NUC



PACKING
Approvals: PMUC N° 17-0364 AND 17-0363

T < 310°C | S < 1 m/s | P < 400 bar | pH 0-14

LATTYPACK VALVE



PACKING
Approval: ISO 15848-1

T -100°C to 450°C | S < 1 m/s | P 80 to 450 bar | pH 0-14

LATTYPACK VALVE NUC



PACKING
Approval: PMUC

T < 450°C | S < 1 m/s | P < 400 bar | pH 0-14

LATTYPACK OIL PACKING



PACKING
Approvals: API 622 (2018, 3RD EDITION), 624 AND 641, API 589 AND 607, ISO 15848-1 BH 425°C CO3, TA LUFT VDI 2440, SHELL MESC SPE 85/203-204

T 450°C / 650°C | S < 1 m/s | P 450 bar | pH 0-14

LATTYPACK OIL ROLLER



BRAIDED
Approval: API 622

T < 310°C | S < 1 m/s | P < 400 bar | pH 0-14

AUTOCLAVES RINGS

RINGS



T -100°C to 300°C | S < 1 m/s | P 400 bar | pH 0-14

LATTYGRAF HPML

GASKET
Approvals: API 6FB, DVGW, OXYGEN GAS AND LIQUID SERVICE



T -200°C to 700°C | P 0 to 250 bar | pH 0-14

The temperature, pressure and maximum speed parameters indicated cannot be combined in any way

Designer of industrial sealing solutions

WITH A FOCUS ON SAFETY AND ENVIRONMENTAL PROTECTION

GROUPE LATTY offers you various training courses led by its multilingual experts. These training modules are dedicated to the selection of sealing solutions with a focus on their implementation and good practices in the assembly of equipment, a guarantee of security for your personnel and equipment reliability.



TRAINING
ROTARY UNITS



TRAINING
BOLTED
ASSEMBLIES



TRAINING
VALVES AND
FITTINGS



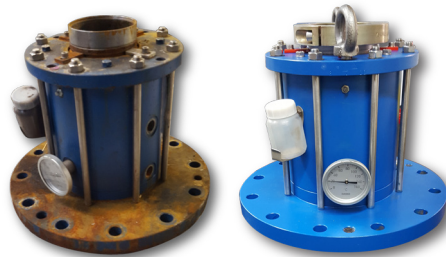
MAINTENANCE ASSISTANCE INTERVENTION

RECONDITIONING OF MECHANICAL SEALS

Service centres have all the necessary repair and refurbishment tools and equipment (ultrasonic bath, milling machine, lathe, biological degreasing systems, surface, grinding machine, lapping machine optical flatness measuring equipment etc., in order to extend the lifetime of your equipment with retrofitting, lower maintenance costs and the ability to train our customers in seal and packing installation either on the customer's premises or at our site.

SAQR-ATEX CERTIFIED REPAIR

The guarantee of an identical reconditioning, without modification of the protection modes or security levels.



EXAMPLE OF THE RECONDITIONING OF A SEAL CARTRIDGE



GRUPE LATTY's service centres and subsidiaries are available worldwide to meet your requirements. List of locations on our website.



1 rue Xavier Latty 28160 BROU - FRANCE Tel. : +33 (0)2 37 44 77 77

www.latty.com